

BIG

BANQUET
SALE DAY

Thursday 25th February 2016 at 4.00pm



BANQUET **BB**
A GENETIC FEAST

BANQUET SIRE POWER



Banquet Frederick F683



Banquet Forbidabull F485



Millah Murrah Doc F159



Banquet Endeavour E007



Banquet Graduate G464



Banquet Garton G275



Banquet Golding G306



Anvil Fusion F275

100 BIG BOLD ANGUS BULLS

THURSDAY 25th FEBRUARY at 4.00pm

On property, 420 Fosters Lane, Mortlake

Sale day inspection from 1.00pm

Inspection afternoon on Thursday 18th February from 1:00pm

Free
of all known
Recessive Genetic
Disorders.



NOELEEN BRANSON
P.O.Box 166 Mortlake VIC. 3272
Mobile: 0437 029 992
Email: banquetangus@westvic.com.au

DIANNA BRANSON
Mobile: 0400 944 188
Email: dee.branson@hotmail.com

STEPHEN BRANSON
P.O.Box 166 Mortlake VIC. 3272
Mobile: 0419 884 839
Email: banquetangus@westvic.com.au

GORDON BRANSON
Mobile: 0488 992 767

Website: www.banquetangus.com.au

SALE INFORMATION

INSPECTION:

We encourage buyers to inspect the bulls prior to sale day. It allows us to assist you select the sire best suited to your needs. Phone us on 0419 884 839 and advise us of your intending visit.

Lots catalogued are available for inspection from 1.00pm, Thursday 25th February.

FREE DELIVERY:

Banquet offers free delivery to the buyer's nearest town on route to Adelaide, SA and Emerald, QLD and to the property within Vic.

STOCK HEALTH:

Banquet is MN2 accredited under the Bovine Johne's Disease Market Assurance Program. Certificate Number VC128. All bulls have been Vet checked by Dr Craig Wood, Terang. They have all undergone a physical examination of external genitalia and conformation. At the time of the examination involving a crush side semen assessment was performed. The crush side test involves visualisation of the penis and collection of semen. This semen is then analysed for density, mass motility and forward motility. All bulls in this catalogue were considered sound at the time of the examination. They have been vaccinated with pestiguard, vibriovac and 7 in 1. Any bulls purchased for QLD will be vaccinated against 3 day sickness and receive the 3 germ tick fever vaccination.

REBATE TO OUTSIDE AGENTS:

Outside agents accompanying a purchaser to the sale are entitled to a 5% rebate. Please refer to page 3 for further detail.

AFTER SALE SERVICE:

Banquet is renowned for excellence in providing after sales service. If in doubt, speak with us or with any one of our many satisfied clients.

THE BANQUET BULL GUARANTEE:

All bulls are backed by a 3 YEAR GUARANTEE. In the event of a bull proven to be infertile or incapable of natural service the vendor can either offer a suitable replacement if available or issue a credit for future sales. The credit is a pro-rata value of the bull minus the salvage value. The guarantee can only apply if the bulls' incapacity is not caused by injury or disease since taking delivery. Any claim must be accompanied by a relevant veterinary certificate. The vendor retains the right to obtain independent veterinary confirmation of any claim.

It is important to understand that normal care must be taken and good husbandry practices observed, as we cannot replace a bull that is injured or dies for any reason. As such, we recommend you insure animals against injury. A representative of an insurance service organisation will be available on sale day.

RECESSIVE GENETIC CONDITIONS (see pages 74 & 75)

All bulls in this Sale are free of AM, NH, CA and DD by parentage, or have been tested free.

NO CARRIER BULLS ARE BEING OFFERED FOR SALE

FURTHER INFORMATION:

Contact Stephen or Noeleen Branson by phoning 0419 884 839 or 0437 029 992
or Email banquetangus@westvic.com.au



OUTSIDE AGENT COMMISSION REBATES



5% rebate will be paid to all agents that attend and who purchase with or on behalf of their clients and settle within seven days of sale date.



2% rebate will be paid to all agents introducing clients that purchase but not accompanied by them to the sale. A written introduction must be received by the vendor 48 hours prior to the sale and accounts must be settled within 7 days of the sale date.

SIGHT UNSEEN PURCHASERS PROGRAM

Available to buyers who cannot attend the
Sale with 100% satisfaction guarantee.

Those purchasers who have discussed their requirements with us we offer a 100% money back guarantee if the purchaser is not completely satisfied with their purchase within seven days of taking delivery. However the purchaser will be responsible for return transport costs.

FOREWORD

In the foreword in our Spring Sale Catalogue I imagined the excitement of counting calves for the weaner Sales at \$1000+/head. My imagination fell short of the reality. Some of our clients averaged in excess of \$1100/head for their steer and heifer weaners.

Seasonal challenges in Southern Australia has meant that fencing contractors and fertiliser salesman may not be as busy as I thought. However it has made purchasing fodder an economically sound and far less stressful decision. This has flowed on to helping our cropping cousins to salvage something from what has been a horrendous season for them.

Please do not become complacent with the state of our Industry just because we have entered a period of profitability. There is so much that must be done if further generations are to prosper. Do not underestimate the importance of the live trade in both our Northern and Southern markets at present.

There are still major problems with the way red meat is traded from grower to consumer. The fiasco at the opening of the Barnawatha Saleyards is just a symbol of the deeper problem. The arrogance of the major buyers and their contempt towards producers was showcased for all to see. Also the ACCC lived up to its reputation of being unable or unwilling to address practices that have been entrenched in livestock industries for generations.

2015 has been a year of firsts at Banquet. Our first Spring Sale in September was very successful. It allowed producers to top up their bull power mid year before joining for their Spring calving. We believe it was the first bull sale to be held in the Mortlake Saleyards.

The "Belles of Banquet" Female Sale in November was the first time we had offered a significant number of females for sale. Over the two days we had 40 degrees and wind and dust, the roof leaving part of the shearing shed and a windmill blowing over. The next day was 16 degrees with wind and showers. Our resident koala visited the Sale cows to say goodbye – something our cows don't appreciate. But the show went on and breeders from Victoria, South Australia, Tasmania, New South Wales and Queensland showed their appreciation of our cow herd in the most sincere way.

2016 is starting with great promise. By Christmas we will know what twists and turns the year will throw at us. We hope we are altogether to take on the challenges of 2017. Enjoy the ride and watch for those who need a hand back into the saddle.

In closing Noeleen, Gordon, Dianna, Hamish and I wish you all a safe and kind 2016. We look forward to sharing February 25th with as many of you as possible.

Please plan to stay after the Sale to enjoy our hospitality.

Agents' Contacts




 **Allan Hickey**
Camperdown Office - 03 5593 1822
AH: 03 5593 9241 Mob: 0409 675 948



 **Ross Milne**
Hamilton - 0408 057 558




 **Andy McGeoch**
Dubbo - 0418 737 470



 **Colby Ede**
Toowoomba - 0417 265 980




 **Gary Whitehead**
Mortlake Office - 03 5599 2004
Mob: 0419 353 254




 **Kevin Norris**
Albury - 0419 482 151



 **Andrew Sloan**
Melbourne - 0428 522 204



 **Peter Godbolt**
Albury - 0457 591 929



Peter Rollason
0419 600 323

Why you need Big Bold Banquet Bulls

Banquet is a family owned and operated seedstock business focussed on making more dollars for clients. This is achieved through the greater efficiencies and productivity that Banquet genetics give.

Banquet cattle are different from a majority of Angus; bigger, more powerful, faster growing, with extra muscling capabilities and have extremely quiet temperament. Simply put, because they have the capacity to grow quickly to heavier weights, yet have adequate muscling and fat cover at domestic market weights, they allow clients the flexibility to target the most lucrative market at any time. This ensures greater profitability.

Producers, feedlotters, restockers and processors alike are targeting Banquet bloodline calves.

Banquet markets over 200 bulls annually through our annual auction sale; occasional other specific auctions and extensive private selection sales. All bulls come with Banquet's after sales support and service guarantees.

You buy more than just a bull at Banquet!



The Branson family of Noeleen, Stephen, Gordon, Dianna and Hamish take great pride in presenting their stock to you. Beyond Banquet Angus this also extends to Gordon's Banquet White Suffolks, Dianna's Banquet Brangus and Hamish's Banquet Suffolks.

BLOCKBUSTER 'BELLES OF BANQUET' SALE

The 'Belles of Banquet' Angus female sale in November produced a stunning result with 110 head selling to a top of \$30,000 and averaging \$6681.

This is the first time Banquet has ever offered a significant number of females for sale in their 24 year history, with only a few select lots at special events being offered previously.



160 COMMERCIAL HEIFERS RISING TWO YEARS - PTIC A/C Drysdale Partnership

Sourced from leading Banquet Clients
Denholm Green, Glenferrie, Nangana and Wright's Swamp

100+ PTIC to fixed time AI to Dylemma Radar W42 on 5th June 2015
50 + PTIC to Banquet calving ease sires
– due to commence calving mid March for 5 weeks.
All drenched and vaccinated with 5 in 1 and Pestiguard.

To be offered in Lots of 20 immediately prior to the Bull Sale and on Auctions Plus.



AI SIRE DYLEMMA RADAR W42



Genetic Status: AMF NHF CAFU DDF Ident: CBJW42 DOB: 08/01/2001
RANUI W RADIATA 820 (NZ) ATAHUA WESTPOINT 6794 (NZ)
SIRE: NZE9661 BRACKENFIELD RADAR (NZ) DAM: VONT059 BANQUET KITE T59 (AI) (ET)
BRACKENFIELD VERONICA T21 (NZ) BANQUET KITE P43 (AI) (ET)

January 2016 Angus Australia BREEDPLAN																	
Angus	CE Dir	CE Dtrs	Gest Lgth	Birth Wt.	200 Wt.	400 Wt.	600 Wt.	MC Wt.	Milk	Scrotal	D to Calv	Carc Wt.	EMA	Rib Fat	Rump Fat	RBV	IMF
EBV	+5.1	+4.2	-1.8	+2.8	+33	+63	+89	+100	+13	+0.4	+6.0	+42	+9.9	-2.7	-4.7	+3.3	-1.4
ACC	90%	80%	98%	98%	97%	97%	97%	95%	96%	96%	77%	91%	91%	91%	91%	88%	89%

Traits Observed: BWT,400WT,600WT,SS,FAT,EMA,IMF,Genomics

Radar W42 was selected for these joinings based on his exceptional calving ease, strong growth and carcass. He is outstanding in his hair type and with a soft fine skin. Radar sold at the 2003 National Show and Sale for \$40,000. His dam, Banquet Kite T59, produced six sons and numerous grandsons used at Banquet. Her 26 sons have averaged \$9,600. A daughter holds the record price for a female sold at Sydney Show at \$38,000.



BANQUET FEATURE SIRES

BANQUET GENTLEMAN G500

Waitara Valley Tex (NZ)
Sire: HINGAIA 469 (NZ)
 Hingaia 910 (NZ)

TE Mania Unlimited U3271
Dam: VERMONT DREAM Y301
 Banquet Dream Q117

It is gratifying to see the industry appreciating the genetics that can consistently breed better calves for longer. This was evident at the recent Millah Murrah Sale when a son of the 29 year old Hingaia 469 set a new record of \$150,000.

At Banquet we have targeted individuals that give survivability and maternal power. One combination that has excelled for us is Hingaia 469 with the Dream family.

Banquet Gentleman G500 is one of those. His first calves are special. A freak accident destroyed his near side wheel in his first joining. So sorry, no photos. We are already searching for his best son.



LOT 7 – SON OF G500

ANGUS GROUP BREEDPLAN	DIR	DTRS	GL	Bwt	200	400	600	Mwt	Milk	SS	DC	Cwt	EMA	Rib	Rump	RBV%	IMF%
	+0.4	-0.6	-3.5	+6.9	+46	+91	+132	+134	+13	+1.8	-2.6	+56	+0.8	-0.5	-1.1	+0.1	+1.4
	68%	60%	72%	84%	81%	82%	81%	75%	67%	82%	59%	73%	72%	71%	73%	69%	68%

BANQUET FORTUNE F710

Banquet Time Frame Y135
Sire: BANQUET BALLIS B017
 Banquet Mavis Y032

Banquet Excitement X088
Dam: BANQUET DREAM C074
 Banquet Dream A037

Fortune F710 is a big thick and muscular sire. We have retained him as one of our picks of the Ballis B017 sons. We sold over 100 sons of B017 to average \$9,000. The first son of F710 was in our 2015 Spring Sale and was purchased by Woorabinda for \$10,000. The F710 sons in this catalogue show extra length of body, strong loins and thick hindquarters.



LOT 6 – SON OF F710

ANGUS GROUP BREEDPLAN	DIR	DTRS	GL	Bwt	200	400	600	Mwt	Milk	SS	DC	Cwt	EMA	Rib	Rump	RBV%	IMF%
	-2.0	+1.9	-3.1	+5.2	+42	+76	+101	+95	+12	+1.4	-3.3	+52	+4.9	0.0	-0.1	+0.9	+0.8
	66%	49%	61%	92%	89%	89%	87%	76%	62%	84%	44%	73%	74%	71%	75%	67%	64%

BANQUET FEATURE SIRES

BANQUET FREDERICK F683

BSS Limited Design (USA)
Sire: COONAMBLE Z3
 Imran Rosebud U17

CA Future Direction 5321 (USA)
Dam: VERMONT DREAM B272
 Vermont Dream Y301

F683 was used prior to his purchase in 2013 by Barry Pitt. 2013 was certainly a good year for Barry, he secured both F683 and G306 for excellent value. As usual we retained semen and F683 has the largest number of sons in this Sale. We consider Vermont Dream Y301 to be the most influential, non Banquet bred, Dream cow. F683 is a grandson of Y301. Through his sire he brings another top cow, Imran Rosebud U17. On inspection F683 had extra extension of neck, length of body and strong loin. His progeny show these traits and his "K" and "L" calves are standouts.



ANGUS GROUP BREEDPLAN	DIR	DTRS	GL	Bwt	200	400	600	Mwt	Milk	SS	DC	Cwt	EMA	Rib	Rump	RBV%	IMF%
	-1.4	-1.6	-3.2	+5.2	+46	+85	+120	+116	+7	+1.2	-2.4	+69	+6.1	-2.5	-1.7	+0.6	+1.9
	72%	54%	80%	93%	88%	88%	84%	79%	70%	86%	49%	74%	72%	73%	73%	66%	66%

BANQUET GOLDING G306

Witalocka X10
Sire: BANQUET DUNCAN D412
 Banquet Dream A250

Banquet Big Sky Z113
Dam: BANQUET LASS C219
 Jackson Frontier Lass Z8

Golding G306 was an exceptional bull in our 2013 Sale. He was strong headed, long, thick and deep bodied. Barry Pitt showed great judgement to secure him for \$10,000. Another great value purchase by Barry. We retained semen and his sons are outstanding. Showing all the traits we saw in his sire. It is hard to compare the special bulls from different Sales but Lots 2 and 3 are with our best ever.



ANGUS GROUP BREEDPLAN	DIR	DTRS	GL	Bwt	200	400	600	Mwt	Milk	SS	DC	Cwt	EMA	Rib	Rump	RBV%	IMF%
	-7.2	-2.9	+4.8	+9.3	+52	+97	+133	+138	+11	+4.2	-3.3	+69	+4.0	-2.7	-1.8	+1.3	+0.6
	63%	40%	77%	86%	80%	81%	81%	76%	63%	78%	36%	69%	65%	67%	67%	57%	56%

BANQUET FEATURE SIRE

BANQUET ENDEAVOUR E007

Sire: BANQUET XTRA BELIEF X030 Dam: BANQUET KIWI DREAM M41



E007 is maturing into a massive bull. He shows extra length and capacity. He is the last son of the legend Banquet Kiwi Dream M41. M41 produced 50 sons at Banquet to average \$10,000. This included the former Aust. Angus auction record of \$50,000 for Banquet Time Frame Y135. Since then three Dream cows have held the Aust. Record at \$27,000, \$45,000 and \$48,000. Xtra Belief X030, sire of E007, was the corner stone of our program for many years. His sons were highly sought after for their frame, muscularity and clean skins. His daughters continue to breed exceptionally well.

ANGUS GROUP BREEDPLAN	DIR	DTRS	GL	Bwt	200	400	600	Mwt	Milk	SS	DC	Cwt	EMA	Rib	Rump	RBY%	IMF%
	-5.9	-2.0	-0.2	+6.4	+38	+69	+93	+105	+13	+3.2	-1.0	+45	+2.4	+0.4	-0.4	+1.2	+0.5
	69%	60%	72%	89%	86%	87%	85%	81%	73%	84%	56%	76%	73%	76%	75%	69%	70%

MILLAH MURRAH EQUATOR D78

Sire: BT EQUATOR 395M (USA) Dam: MILLAH MURRAH RADO Y119



We selected D78 for his strong maternal family lines and powerful phenotype. He is adding growth and stretch to progeny in every herd he has been used in. D78 also offers valuable benchmarking for our home bred sires.

ANGUS GROUP BREEDPLAN	DIR	DTRS	GL	Bwt	200	400	600	Mwt	Milk	SS	DC	Cwt	EMA	Rib	Rump	RBY%	IMF%
	+0.1	+3.3	-9.3	+4.8	+59	+109	+159	+179	+23	+2.6	-3.8	+87	+2.7	-1.6	-1.9	+1.6	0.0
	89%	76%	99%	98%	98%	98%	98%	94%	94%	97%	68%	91%	91%	90%	90%	87%	89%

MILLAH MURRAH DOC F159

Sire: MILLAH MURRAH EQUATOR D78 Dam: HAZELDEAN Y275



Ross Thompson of Millah Murrah recommended we consider Doc F159. On inspection Doc has the phenotype we admire. He is high headed, deep bodied and fine skinned. His progeny match the Banquet type and offer a different pedigree.

ANGUS GROUP BREEDPLAN	DIR	DTRS	GL	Bwt	200	400	600	Mwt	Milk	SS	DC	Cwt	EMA	Rib	Rump	RBY%	IMF%
	-5.9	-2.6	-5.0	+6.7	+58	+109	+150	+150	+21	+3.1	-4.1	+81	+1.9	+1.7	+1.9	-0.2	+1.1
	78%	66%	97%	96%	93%	94%	93%	84%	76%	92%	60%	79%	81%	83%	81%	75%	80%

BANQUET FEATURE SIRE

BANQUET GRADUATE G464

Sire: BANQUET XTRA BELIEF X030 Dam: BANQUET JULIE W164



Graduate G464 is a moderate framed bull with exceptional thickness and muscularity. He weights in excess of 1200kg. We retained G464 for these traits and more importantly for the power of his dam. Sons of Julie W164 have sold to \$19,000 and averaged \$12,500. She is deep, thick, strong headed and has a magnificent udder. Not surprisingly Julie W164 is a daughter of Hingaia 469. G464 is the sire of seven calves in this catalogue.

ANGUS GROUP BREEDPLAN	DIR	DTRS	GL	Bwt	200	400	600	Mwt	Milk	SS	DC	Cwt	EMA	Rib	Rump	RBY%	IMF%
	-6.0	-1.4	-1.0	+6.8	+38	+74	+101	+102	+13	+2.8	-3.1	+46	+4.3	0.0	+1.0	+1.0	+0.3
	55%	49%	61%	71%	73%	74%	74%	69%	63%	75%	45%	65%	60%	61%	61%	58%	57%

BANQUET GARTON G275

Sire: BANQUET DUNCAN D412 Dam: BANQUET IRENE C417



Garton G275 was the top price bull in our 2013 Sale at \$20,000. He was purchased by our long term supporters, Charles and Cass Kimpton "Toora West". G275 is a big, heavy, soft and easy doing sire. Many times we have proved these traits can be combined. We have now used five sons of Duncan D412.

ANGUS GROUP BREEDPLAN	DIR	DTRS	GL	Bwt	200	400	600	Mwt	Milk	SS	DC	Cwt	EMA	Rib	Rump	RBY%	IMF%
	-1.5	-0.1	-2.1	+7.3	+44	+82	+117	+131	+8	+2.5	-2.7	+54	-3.4	-0.2	+1.6	-1.8	+1.4
	61%	37%	85%	84%	79%	79%	79%	76%	63%	76%	33%	68%	60%	64%	63%	53%	52%

ANVIL FUSION F275

Sire: WK REPLAY (USA) Dam: TE MANIA Y147



We purchased the \$17,000 Fusion as our pick of a very impressive group of E.T brothers. Fusion attracted us with his strong loin, wide hindquarter and rugged head. His dam is equally impressive. She is deep bodied, soft and easy doing. Her progeny are consistently at the top end of their contemporary group. Keith Kerridge recognised this when he purchased her as an aged cow from Anvil for \$16,000. If Fusion's daughters inherit the traits of Y147 they will be very valuable to our program.

ANGUS GROUP BREEDPLAN	DIR	DTRS	GL	Bwt	200	400	600	Mwt	Milk	SS	DC	Cwt	EMA	Rib	Rump	RBY%	IMF%
	+0.5	+0.5	-0.6	+3.6	+44	+84	+106	+88	+21	+2.8	-6.6	+58	+4.6	-0.2	+0.3	+0.3	+1.9
	66%	51%	82%	89%	84%	84%	82%	76%	65%	84%	51%	72%	71%	70%	72%	67%	65%

1 BANQUET KIDMAN K079 HBR

Ident: VONK079 Tattoo: SNB K079 (T&F) Born: 11/05/2014 AMFU NHFU CAFU DDFU

BANQUET EZZA KIWI E214 (AI) (ET)
VONG065 BANQUET GITCH G065 (AI)
 BANQUET ECLYPTA A500

VERMONT LEGACY D353 (AI)
VONF608 BANQUET KITE F608 (TW)
 VERMONT KITE B290 (AI) (ET)

Kidman K079 is a power bull to start this offering. He is strong headed with a deep body, tremendous fill in his flank and smooth skin. Gitch G065 was our choice of the sons of Ezza Kiwi E214. As a mature sire he was sold to Brett Stewart at "Wimmera Downs". His sire, Ezza Kiwi E214, was imported from NZ as an embryo. He is a son of the legend Hingaia 469. E214 was selected in our 2011 sale by Chris and Geoff Roberts, for \$10,000.

Actual Scrotal: 39 cm Age: 21 months Purchaser: \$

January 2016 Angus Australia BREEDPLAN											
Angus	EBV	Birth Wt.	Milk	200 Wt.	400 Wt.	600 Wt.	Scrotal Size	Carcase Wt.	EMA	Rump Fat	IMF %
	Acc	6.9	12	49	95	125	2.3	66	1.7	0.1	0.8
		68%	39%	62%	63%	60%	67%	50%	47%	50%	39%

Traits Observed: BWT, 200WT, 400WT(x2), SS, FAT, EMA, IMF



LOT 1

2 BANQUET KEITH K031 (AI) HBR

Ident: VONK031 Tattoo: SNB K031 (T&F) Born: 1/04/2014 AMFU NHFU CAFU DDFU

BANQUET DUNCAN D412 (AI)
VONG306 BANQUET GOLDING G306
 BANQUET LASS C219

BANQUET ALLAN A190 (AI)
VOND273 BANQUET DREAM D273
 BANQUET DREAM A134 (AI) (ET)

Keith K031 is one of our stars of this Sale. He combines phenotype, pedigree and statistics. Keith K031 is strong headed, thick and muscular. The width of his pins is exceptional. He is the first son of G306, our best breeding son of Duncan D412. G306 sons excel for their thickness and muscle expression. G306 sold for \$10,000 to Barry Pitt. Dream D273, dam of K031, sold to Fernleigh Stud for \$8,000 in our "Belles of Banquet" Sale. Keith K031 recorded the highest EMA scan of our 2014 drop bulls. His marbling scan was one of our highest. Semen Retained.

Actual Scrotal: 45 cm Age: 22 months Purchaser: \$

January 2016 Angus Australia BREEDPLAN											
Angus	EBV	Birth Wt.	Milk	200 Wt.	400 Wt.	600 Wt.	Scrotal Size	Carcase Wt.	EMA	Rump Fat	IMF %
	Acc	7.6	11	47	88	116	2.7	57	3.9	0.2	1.2
		63%	43%	64%	66%	68%	68%	54%	52%	54%	42%

Traits Observed: GL, 200WT, 400WT(x2), 600WT, SS, FAT, EMA, IMF



LOT 2

3 BANQUET KODAK K084 HBR

Ident: VONK084 Tattoo: SNB K084 (T&F) Born: 13/05/2014 AMFU NHFU CAFU DDFU

BANQUET DUNCAN D412 (AI)
VONG306 BANQUET GOLDING G306
 BANQUET LASS C219

BANQUET COLLECTIVE C351 (AI) (ET)
VONF253 BANQUET DREAM F253 (AI)
 BANQUET DREAM V124 (AI) (ET)

The style, type and balance of K084 stamps him as one of our best. K084 has a long, strong head. A deep body with volume and substance and a strong spine. K084 is a powerful bull but with softness and great doing ability. These first sons of Golding G306 are outstanding. The dam side of K084 is outstanding. Combining our best 24J son, C351, with the outstanding Dream V124. V124 is a flush sister to V104, V109, V112 and V116 who were all donors for us. Her four sons have averaged \$12,000. One sold for \$20,000 to Robert Love. Semen Retained.

Actual Scrotal: 41 cm Age: 21 months Purchaser: \$

January 2016 Angus Australia BREEDPLAN											
Angus	EBV	Birth Wt.	Milk	200 Wt.	400 Wt.	600 Wt.	Scrotal Size	Carcase Wt.	EMA	Rump Fat	IMF %
	Acc	8.5	10	51	93	126	2.8	63	3.2	0.0	1.3
		72%	44%	67%	68%	70%	69%	56%	53%	55%	43%

Traits Observed: BWT, 200WT, 400WT(x2), 600WT, SS, FAT, EMA, IMF



LOT 3

4 BANQUET KINDRED K001 HBR

Ident: VONK001 Tattoo: SNB K001 (T&F) Born: 7/01/2014 AMFU NHFU CAFU DDFU

BANQUET TIME FRAME Y135 (AI) (ET)
 VONB017 BANQUET BALLIS B017 (AI)
 BANQUET MAVIS Y032 (AI)

B/R NEW FRONTIER 095
 CLQZ8 JACKSON FRONTIER LASS Z8 (AI)
 BRABANT FERNLEIGHS FDARY T7 (AI)

Kindred K001 is a true power bull. He is strong headed, long bodied and heavy boned. His full brother sold for \$14,500 to Wittalocka stud. His dam, is the grand dam of G306 which is the sire of Lots 2 and 3. The sire of K001, Ballis B017, is a super sire at Banquet. His progeny sales have grossed in excess of \$1M at Banquet.

Actual Scrotal: 45 cm Age: 25 months Purchaser: \$

January 2016 Angus Australia BREEDPLAN										
Angus	Birth Wt.	Milk	200 Wt.	400 Wt.	600 Wt.	Scrotal Size	Carcase Wt.	EMA	Rump Fat	IMF %
EBV	4.9	15	43	81	108	2.8	54	2.4	-2.3	1.4
Acc	62%	60%	62%	62%	61%	59%	55%	54%	54%	50%

Traits Observed:200WT,400WT(x2),600WT,SS,FAT,EMA,IMF



LOT 4

5 BANQUET KIRKPATRICK K025 (AI) (ET) HBR

Ident: VONK025 Tattoo: SNB K025 (T&F) Born: 29/03/2014 AMFU NHFU CAFU DDFU

S A V HERITAGE 6295
 USA16687737 S A V HARVESTOR 0338
 S A V EMBLYNETTE 7749

BANQUET ARROGANCE V100 (AI)
 VONZ220 BANQUET KITE Z220 (AI)
 BANQUET KITE X178 (AI)

At Banquet we try new things when we believe they can add value to our product. SAV Harvestor is one of those. The strength and substance of K025 is an indicator of what this sire may achieve when joined to cows with extra length and frame. We will continue to search.

Actual Scrotal: 43 cm Age: 22 months Purchaser: \$

January 2016 Angus Australia BREEDPLAN										
Angus	Birth Wt.	Milk	200 Wt.	400 Wt.	600 Wt.	Scrotal Size	Carcase Wt.	EMA	Rump Fat	IMF %
EBV	7.5	12	51	90	112	1.7	66	3.6	-0.3	0.6
Acc	62%	53%	59%	59%	56%	51%	50%	46%	46%	44%

Traits Observed:BWT,200WT,400WT(x2),600WT,SS,FAT,EMA,IMF



LOT 5

6 BANQUET KYNETON K081 HBR

Ident: VONK081 Tattoo: SNB K081 (T&F) Born: 11/05/2014 AMFU NHFU CAFU DDFU

BANQUET BALLIS B017 (AI)
 VONF710 BANQUET FORTUNE F710
 BANQUET DREAM C074

BANQUET ZAPPA Z236 (AI)
 VONF587 BANQUET WIVEM F587 (TW)
 BANQUET WIVEM C234 (AI)

K081 has a magnificent skin, softness and muscularity. This muscle pattern is reflected in his EMA EBV. When you study his pedigree you find a double cross of Radar W42, our most muscular sire. Fortune F710 is our most powerful B017 son.

Actual Scrotal: 40 cm Age: 21 months Purchaser: \$

January 2016 Angus Australia BREEDPLAN										
Angus	Birth Wt.	Milk	200 Wt.	400 Wt.	600 Wt.	Scrotal Size	Carcase Wt.	EMA	Rump Fat	IMF %
EBV	4.3	13	39	74	96	1.4	49	6.0	-1.3	0.5
Acc	73%	45%	68%	69%	71%	70%	57%	55%	57%	46%

Traits Observed:BWT,200WT,400WT(x2),600WT,SS,FAT,EMA,IMF



LOT 6

7 BANQUET KEVIN K085 HBR

Ident: VONK085 Tattoo: SNB K085 (T&F) Born: 13/05/2014 AMFU NHFU CAFU DDF

HINGAIA 469 (AI)
 VONG500 BANQUET GENTLEMAN G500 (AI) (ET)
 VERMONT DREAM Y301 (AI) (ET)

BANQUET ZEALFUL Z021
 VONE335 BANQUET BARUNAH E335
 BANQUET BARUNAH V175

To be named "Kevin" you must be one of Noeleen's favourites. Kevin K085 is strong headed with a powerful jaw. He is deep bodied, thick and has strong NZ connections. Remind you of anyone? Following in the footsteps of his name sake, K085 could be a stud sire. Semen Retained.

Actual Scrotal: 41 cm Age: 21 months Purchaser: \$

January 2016 Angus Australia BREEDPLAN											
Angus	EBV	Birth Wt.	Milk	200 Wt.	400 Wt.	600 Wt.	Scrotal Size	Carcase Wt.	EMA	Rump Fat	IMF%
	Acc	7.7	11	49	87	126	2.1	56	0.2	-1.0	1.4
		70%	47%	65%	66%	69%	69%	56%	54%	56%	47%

Traits Observed: BWT,200WT,400WT(x2),600WT,SS,FAT,EMA,IMF



LOT 7

8 BANQUET KINGSTON K078 (APR) APR

Ident: VONK078 Tattoo: SNB K078 (T&F) Born: 9/05/2014 AM3% NH3% CA3% DD3%

HINGAIA 469 (AI)
 VONG500 BANQUET GENTLEMAN G500 (AI) (ET)
 VERMONT DREAM Y301 (AI) (ET)

VONF325 BANQUET F325 (APR)
 BANQUET DREAM A270

Ken K078 is a clean shouldered, long bodied bull. But with that refinement he has excellent thickness and depth of body. He is an APR bull so with no stud competition he could be great buying.

Actual Scrotal: 39 cm Age: 21 months Purchaser: \$

Angus	EBV	Birth Wt.	Milk	200 Wt.	400 Wt.	600 Wt.	Scrotal Size	Carcase Wt.	EMA	Rump Fat	IMF%
	Acc										

Traits Observed:



LOT 8

9 BANQUET KENTHURST K069 HBR

Ident: VONK069 Tattoo: SNB K069 (T&F) Born: 4/05/2014 AMFU NHFU CAFU DDF

HINGAIA 469 (AI)
 VONG500 BANQUET GENTLEMAN G500 (AI) (ET)
 VERMONT DREAM Y301 (AI) (ET)

BANQUET ZAPPA Z236 (AI)
 VONF513 BANQUET ECLYPTA F513
 BANQUET ECLYPTA C174 (AI)

K069 has a great jaw, something we expect with 469 grandsons. He is smooth shouldered with a strong loin. His length of body, volume and muscularity guarantee heavy weights. Weight has always paid, now it pays better. We have a full sister to K069.

Actual Scrotal: 36 cm Age: 21 months Purchaser: \$

January 2016 Angus Australia BREEDPLAN											
Angus	EBV	Birth Wt.	Milk	200 Wt.	400 Wt.	600 Wt.	Scrotal Size	Carcase Wt.	EMA	Rump Fat	IMF%
	Acc	4.8	11	39	76	112	1.2	48	2.2	-2.4	1.0
		71%	48%	66%	67%	70%	69%	57%	54%	56%	47%

Traits Observed: BWT,200WT,400WT(x2),600WT,SS,FAT,EMA,IMF



LOT 9

10 BANQUET KATUNGA K039 HBR

Ident: VONK039 Tattoo: SNB K039 (T&F) Born: 8/04/2014 AMFU NHFU CAF DDFU

HINGAIA 469 (AI)
 VONG500 BANQUET GENTLEMAN G500 (AI) (ET)
 VERMONT DREAM Y301 (AI) (ET)

RAFF MIDLAND Z204 (AI) (ET)
 VONF434 BANQUET DREAM F434 (AI)
 BANQUET DREAM D381 (AI)

An exceptional head with extra muscle and width through his hindquarter. This is how we describe Katunga K039. How would you describe his pedigree? A G500 out of a Raff Midland Z204 daughter out of a Abraham A204 daughter out of an OB45 daughter out of an 036 daughter. We call that stacked!

Actual Scrotal: 40 cm Age: 22 months Purchaser: \$

January 2016 Angus Australia BREEDPLAN											
Angus	EBV	Birth Wt.	Milk	200 Wt.	400 Wt.	600 Wt.	Scrotal Size	Carcase Wt.	EMA	Rump Fat	IMF %
	Acc	7.1	11	45	83	118	2.2	57	3.7	-0.1	1.3
		71%	47%	65%	66%	69%	69%	56%	54%	56%	48%

Traits Observed: BWT, 200WT, 400WT(x2), 600WT, SS, FAT, EMA, IMF



LOT 10

11 BANQUET KEOGH K067 HBR

Ident: VONK067 Tattoo: SNB K067 (T&F) Born: 4/05/2014 AMFU NHFU CAFU DDFU

HINGAIA 469 (AI)
 VONG500 BANQUET GENTLEMAN G500 (AI) (ET)
 VERMONT DREAM Y301 (AI) (ET)

BANQUET DAY DREAM D053 (AI) (ET)
 VONF302 BANQUET DREAM F302
 BANQUET DREAM A130 (AI)

Keogh K067 is the largest frame son of G500. He is strong headed, smooth bodied and has a great skin. For students of pedigree, K067 carries four crosses of the mighty Dream family. Jupiter J263 carries four crosses of Dream also and topped our 2015 sale at \$40,000. Line breeding to superior individuals works.

Actual Scrotal: 40 cm Age: 21 months Purchaser: \$

January 2016 Angus Australia BREEDPLAN											
Angus	EBV	Birth Wt.	Milk	200 Wt.	400 Wt.	600 Wt.	Scrotal Size	Carcase Wt.	EMA	Rump Fat	IMF %
	Acc	6.6	11	47	86	118	2.1	57	3.6	-1.5	0.7
		71%	48%	66%	67%	70%	69%	56%	54%	56%	47%

Traits Observed: BWT, 200WT, 400WT(x2), 600WT, SS, FAT, EMA, IMF



LOT 11

12 BANQUET KOHLMAN K082 HBR

Ident: VONK082 Tattoo: SNB K082 (T&F) Born: 12/05/2014 AMFU NHFU CAFU DDFU

HINGAIA 469 (AI)
 VONG500 BANQUET GENTLEMAN G500 (AI) (ET)
 VERMONT DREAM Y301 (AI) (ET)

BANQUET CORTEZ C153 (AI)
 VONF221 BANQUET IRENE F221
 BANQUET IRENE C417

K082 is the last of this pen of G500 sons. He is smooth shouldered and has a soft, shiny skin. Much like his Uncle, G275, who topped our 2013 sale at \$20,000 to Toora West.

Actual Scrotal: 38 cm Age: 21 months Purchaser: \$

January 2016 Angus Australia BREEDPLAN											
Angus	EBV	Birth Wt.	Milk	200 Wt.	400 Wt.	600 Wt.	Scrotal Size	Carcase Wt.	EMA	Rump Fat	IMF %
	Acc	6.1	10	43	82	111	0.9	51	2.1	-1.0	0.8
		72%	46%	66%	67%	70%	69%	56%	53%	55%	45%

Traits Observed: BWT, 200WT, 400WT(x2), 600WT, SS, FAT, EMA, IMF



BANQUET IRENE C417 – GRAND DAM OF LOT 12



LOT 13

13 BANQUET KILLARA K077 HBR

Ident: VONK077 Tattoo: SNB K077 (T&F) Born: 8/05/2014 AMFU NHFU CAFU DDFU

BANQUET XTRA BELIEF X030 (AI)
VONG077 BANQUET GRANADA G077 (AI)
 BANQUET DREAM B436

BANQUET BALLIS B017 (AI)
VONG233 BANQUET QUIET G233 (AI)
 BANQUET QUIET C164 (AI)

At our 2013 sale Cleveland Past, purchased Granada G077 for \$15,000. They kindly allowed us to use him prior to his trip over the Bass Strait. Killara K077 is one of the progeny. One of our better decisions! K077 is so much like his sire, strong headed with a great jaw and muzzle. He is cleaned skinned with extra muscle bone and grunt.

Actual Scrotal: 45 cm Age: 21 months Purchaser: \$

January 2016 Angus Australia BREEDPLAN											
Angus	EBV	Birth Wt.	Milk	200 Wt.	400 Wt.	600 Wt.	Scrotal Size	Carcase Wt.	EMA	Rump Fat	IMF %
	Acc	5.6	16	43	84	111	4.1	55	3.7	-1.9	0.7
		70%	44%	65%	66%	70%	69%	55%	52%	54%	44%

Traits Observed: BWT,200WT,400WT(x2),600WT,SS,FAT,EMA,IMF



BANQUET GRANADA G077 – SIRE OF LOT 13

14 BANQUET KIAH K046 HBR

Ident: VONK046 Tattoo: SNB K046 (T&F) Born: 9/04/2014 AMFU NHFU CAF DDF

BANQUET BALLIS B017 (AI)
VONF710 BANQUET FORTUNE F710
 BANQUET DREAM C074

BANQUET EXCITEMENT X088
VONE289 BANQUET WIVEM E289
 BANQUET WIVEM B120 (AI)

Kiah K046 is a long bull with a strong top. He has excellent shape to his hind leg and as he moves he shows great expression of his stifle muscle. His sire, F710, is consistently breeding this muscle expression. The sire of his dam, X088, is one of the most resilient, easy doing sires around.

Actual Scrotal: 39 cm Age: 22 months Purchaser: \$

January 2016 Angus Australia BREEDPLAN											
Angus	EBV	Birth Wt.	Milk	200 Wt.	400 Wt.	600 Wt.	Scrotal Size	Carcase Wt.	EMA	Rump Fat	IMF %
	Acc	4.7	12	37	66	89	1.9	46	4.6	0.0	0.8
		63%	47%	67%	69%	71%	71%	57%	56%	58%	48%

Traits Observed: 200WT,400WT(x2),600WT,SS,FAT,EMA,IMF



LOT 14

15 BANQUET KALADBRO K063 HBR

Ident: VONK063 Tattoo: SNB K063 (T&F) Born: 13/05/2014 AMFU NHFU CAFU DD50%

BANQUET BALLIS B017 (AI)
VONF710 BANQUET FORTUNE F710
 BANQUET DREAM C074

BANQUET BELEIF A387 (AI)
VONF418 BANQUET DREAM F418 (AI)
 BANQUET DREAM B189 (AI) (TW)

Another F710 son. Again he is a long strong spined bull. His dam is impeccably bred. Sired by A387, the bull we nicknamed Keith, and from our best Density daughter, B189. B189 is an outstanding donor cow.

Actual Scrotal: 36 cm Age: 21 months Purchaser: \$

January 2016 Angus Australia BREEDPLAN											
Angus	EBV	Birth Wt.	Milk	200 Wt.	400 Wt.	600 Wt.	Scrotal Size	Carcase Wt.	EMA	Rump Fat	IMF %
	Acc	7.1	9.0	47	84	116	2.2	58	1.9	0.0	1.2
		61%	42%	63%	65%	67%	64%	54%	52%	54%	44%

Traits Observed: 400WT(x2),600WT,SS,FAT,EMA,IMF

16 BANQUET KURIC K088 HBR

Ident: VONK088 Tattoo: SNB K088 (T&F) Born: 16/05/2014 AMFU NHFU CAFU DDFU

BANQUET EZZA KIWI E214 (AI) (ET)
VONG065 BANQUET GITCH G065 (AI)
 BANQUET ECLYPTA A500

BANQUET CORTEZ C153 (AI)
VONF658 BANQUET WIVEM F658
 BANQUET WIVEM D553

Check the notes on Lot I for the story on G065. We used C153, the grandsire of K088, for many years for heifer matings. His calving ease was excellent while maintaining growth and exceptional muscle. We had 152 progeny.

Actual Scrotal: 41 cm Age: 21 months Purchaser: \$

January 2016 Angus Australia BREEDPLAN										
Angus	Birth Wt.	Milk	200 Wt.	400 Wt.	600 Wt.	Scrotal Size	Carcase Wt.	EMA	Rump Fat	IMF %
EBV	6.4	10	44	84	114	1.3	57	2.9	-1.9	0.0
Acc	70%	40%	64%	65%	69%	67%	53%	49%	51%	39%

Traits Observed: BWT, 200WT, 400WT(x2), 600WT, SS, FAT, EMA, IMF



LOT 17

17 BANQUET KURTZE K114 HBR

Ident: VONK114 Tattoo: SNB K114 (T&F) Born: 10/06/2014 AMFU NHFU CAFU DDFU

BANQUET EZZA KIWI E214 (AI) (ET)
VONG065 BANQUET GITCH G065 (AI)
 BANQUET ECLYPTA A500

BANQUET ABERDEEN A349
VOND310 BANQUET DREAM D310
 BANQUET DREAM V104 (AI) (ET)

As with the previous lot check Lot 1 for the G065 story. The dam of K114, D310, is outstanding. Her only other son was our highest price Fusion son at \$15,000. Her daughter, F310, is exceptional. D310 was a feature in our "Belles of Banquet" sale and sold for \$27,000 to Heart Angus.

Actual Scrotal: 40 cm Age: 20 months Purchaser: \$

January 2016 Angus Australia BREEDPLAN										
Angus	Birth Wt.	Milk	200 Wt.	400 Wt.	600 Wt.	Scrotal Size	Carcase Wt.	EMA	Rump Fat	IMF %
EBV	6.0	9.0	38	74	97	1.9	47	2.2	-0.2	0.8
Acc	71%	43%	65%	66%	68%	67%	54%	51%	53%	42%

Traits Observed: BWT, 200WT(x2), 400WT, 600WT, SS, FAT, EMA, IMF



BANQUET DREAM D310 – DAM OF LOT 17

18 BANQUET KOKODA K072 HBR

Ident: VONK072 Tattoo: SNB K072 (T&F) Born: 6/05/2014 AMFU NHFU CAFU DDFU

BANQUET DUNCAN D412 (AI)
VONG275 BANQUET GARTON G275
 BANQUET IRENE C417

HINGAIA 469 (AI)
VONA134 BANQUET DREAM A134 (AI) (ET)
 BANQUET DREAM Q32 (AI) (ET)

Our first son of Garton G275. G275 topped our 2013 Sale at \$20,000 to Toora West. His dam, A134 is one of our great old 469 cows. She is preparing for her tenth natural calf. Her sons have sold to \$7,000 and a daughter for \$8,000. She is the grand dam of Lot 2. We prize consistency and survivability. Dream A134 excels. K072 is a soft coated bull with extra depth of flank and spring of rib.

Actual Scrotal: 46 cm Age: 21 months Purchaser: \$

January 2016 Angus Australia BREEDPLAN										
Angus	Birth Wt.	Milk	200 Wt.	400 Wt.	600 Wt.	Scrotal Size	Carcase Wt.	EMA	Rump Fat	IMF %
EBV	6.8	9.0	42	79	109	1.9	49	-0.1	2.3	1.1
Acc	72%	49%	67%	67%	71%	50%	56%	53%	55%	45%

Traits Observed: BWT, 200WT, 400WT(x2), 600WT, FAT, EMA, IMF



LOT 18

19 BANQUET KASTRON K037 (AI) HBR

Ident: VONK037 Tattoo: SNB K037 (T&F) Born: 4/04/2014 AMFU NHFU CAFU DDFU

S A NEUTRON 377
 NGMD337 BOOROOMOOKA ASTRON D337 (AI)
 BOOROOMOOKA VOLITION X199 (AI) (ET)

BANQUET BELEIF A387 (AI)
 VONH260 BANQUET NANNY H260 (AI) (ET)
 BANQUET NANNY V44

We selected Astron after viewing him and his progeny at Witherswood Stud. K037 is the strongest, thickest and most muscular of his Autumn drop sons. His first calving dam is a beauty. Fine fronted with thickness and depth. Her temperament is exceptional and this shows in K037. Two flush brothers to H260 featured as Lots 2 and 3 in the 2014 sale. H265 sold for \$22,000 to Warranboo and H262 sold for \$12,000 to A7 farms. Semen retained.

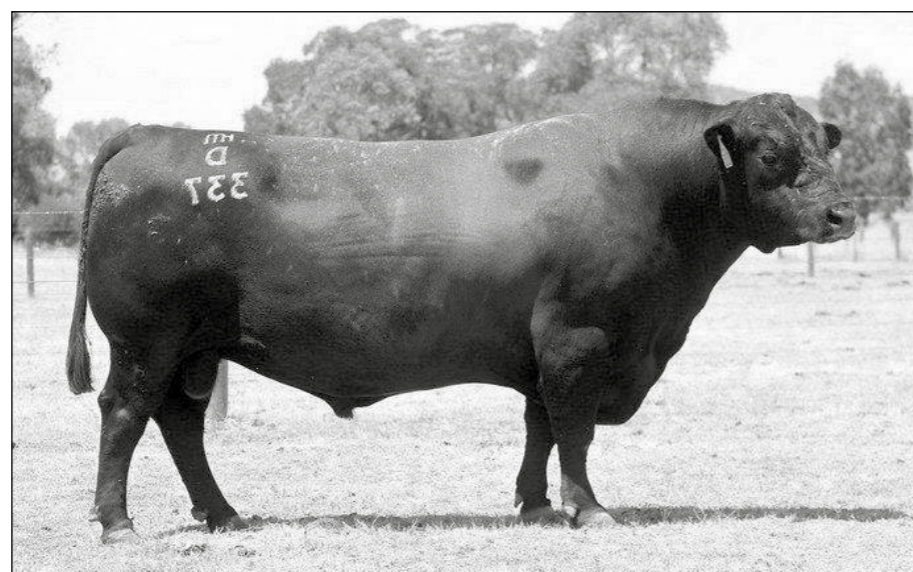
Actual Scrotal: 41 cm Age: 22 months Purchaser: \$

January 2016 Angus Australia BREEDPLAN											
Angus	EBV	Birth Wt.	Milk	200 Wt.	400 Wt.	600 Wt.	Scrotal Size	Carcase Wt.	EMA	Rump Fat	IMF %
	Acc	4.8	14	44	78	112	2.0	59	4.0	2.5	1.2
		72%	53%	69%	69%	72%	71%	60%	58%	58%	52%

Traits Observed:GL,BWT,200WT,400WT(x2),600WT,SS,FAT,EMA,IMF



LOT 19



BOOROOMOOKA ASTRON D337 – SIRE OF LOT 19

FARM INSURANCE

\$\$\$\$ PROTECT YOUR ASSETS \$\$\$\$
COMPETITIVE PREMIUMS & COVER

We offer Professional on Farm Advice relating to all your rural insurance requirements:

- *Livestock Mortality*
- *Dwelling & Contents*
- *Farm Building & Contents*
- *Farm Machinery*
- *Livestock, Hay & Fencing*
- *Liability*
- *Motor Vehicles (All Types)*

RICHARDSON & DENNIS **INSURANCE AGENCIES**

182 Fairy St, Warrnambool
 Ph: (03) 5562 0248

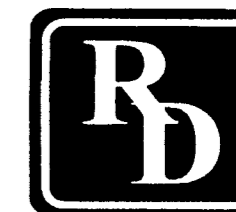
200 Manifold St, Camperdown
 Ph: (03) 5593 2220

Email: admin@richardsonanddennis.com.au



JEFF DENNIS
 Mobile: 0408 529 470

MICHAEL DENNIS
 Mobile: 0408 471 790



Authorised Representative No. 267377

AN OPPORTUNITY

PRIME JUGGERNAUT J15

SIRE: BNAD145 TUWHARETOA REGENT D145

DAM: CXBF20 PRIME LOWAN F20

Stephen Handbury purchased Juggernaut for a \$41,000 record for a yearling bull for his Anvil Stud. Stephens' description of the bull sparked our interest and he certainly did not disappoint on inspection. He showed great capacity, dimension of hindquarter and length of body. His mobility and style was a feature. J15 displayed excellent early growth. We chose to test him in our program. He will add diversity of type and pedigree and be a valuable bench mark.



LOT 20

20 BANQUET LASCELLES L022 (AI) (ET) HBR

Ident: VONL022 Tattoo: SNB L022 (T&F) Born: 23/03/2015 AMFU NHFU CAFU DDFU

TUWHARETOA REGENT D145 (AI) (ET)
CXBJ15 PRIME JUGGERNAUT J15 (AI)
 PRIME LOWAN F20 (AI)

The first son of Juggernaut to be offered. L022 is a very correct, smooth and thick calf. His dam sold for \$17,000 in our Belles of Banquet Sale. L022 has three sisters retained. Outstanding sire potential. We reserve the right to collect semen.

BANQUET BUNDY B002 (AI) (ET)
VOND546 BANQUET IRENE D546
 BANQUET IRENE A213

Actual Scrotal: cm Age: 11 months Purchaser: \$

January 2016 Angus Australia BREEDPLAN											
Angus	EBV	Birth Wt.	Milk	200 Wt.	400 Wt.	600 Wt.	Scrotal Size	Carcase Wt.	EMA	Rump Fat	IMF%
	Acc	3.4	17	43	79	101	1.6	58	6.1	-0.8	2.1
		71%	47%	64%	59%	58%	48%	51%	42%	43%	40%

Traits Observed: BWT, 200WT



BANQUET IRENE D546 – DAM OF LOT 20

21 BANQUET LACOSTE L021 (AI) (ET) HBR

Ident: VONL021 Tattoo: SNB L021 (T&F) Born: 23/03/2015 AMFU NHFU CAFU DDFU

TUWHARETOA REGENT D145 (AI) (ET)
CXBJ15 PRIME JUGGERNAUT J15 (AI)
 PRIME LOWAN F20 (AI)

Perhaps a little more power and growth in this calf. His dam has been and still is an exceptional breeder for Gordon. She is also the dam of Lot 4. Her sons have sold to \$14,500 to Wittalocka Stud. One daughter has produced two sires for Banquet. One of these, G306, features as sire of Lots 2 and 3. Another daughter of Z8 has been flushed. Dont miss this opportunity. We reserve the right to collect semen.

B/R NEW FRONTIER 095
CLQZ8 JACKSON FRONTIER LASS Z8 (AI)
 BRABANT FERNLEIGHS FDARY T7 (AI)

Actual Scrotal: cm Age: 11 months Purchaser: \$

January 2016 Angus Australia BREEDPLAN											
Angus	EBV	Birth Wt.	Milk	200 Wt.	400 Wt.	600 Wt.	Scrotal Size	Carcase Wt.	EMA	Rump Fat	IMF%
	Acc	6.5	15	49	87	117	2.4	65	5.1	-1.9	2.5
		72%	51%	66%	61%	61%	51%	54%	46%	47%	44%

Traits Observed: BWT, 200WT



LOT 21

AN OPPORTUNITY

ABERDEEN ESTATE HOMER H70

SIRE: TE MANIA EMPEROR E343

DAM: ABERDEEN ESTATE DREAM F21

Homer H70 was purchased at the Aberdeen dispersal in partnership with Anvil Stud. His pedigree is a "who's who" of record price Angus cattle. His sire Emperor E343 was the Australian Record holder at \$91,000. His dam Dream F21 is the record holder at \$48,000.

The first calves by Homer show great potential.



LOT 22

22 BANQUET LINTON L008 (TW) HBR

Ident: VONL008 Tattoo: SNB L008 (T&F) Born: 17/02/2015 AMFU NHFU CAFU DDFU

TE MANIA EMPEROR E343 (AI)
AHWH70 ABERDEEN ESTATE HOMER H70 (AI)
 ABERDEEN ESTATE DREAM F21 (AI) (ET)

S A F 598 BANDO 5175
VONB216 BANQUET DREAM B216 (AI) (ET)
 BANQUET KIWI DREAM (AI)

The first son of Homer to be offered. Tremendous volume and thickness in this calf. His dam, B216, is a direct daughter of Kiwi Dream M41. Possibly the most influential cow in the history of Angus in Aust. The sire of B216, Bando 5175, was an incredibly powerful sire who produced sons selling at Banquet to \$20,000. We reserve the right to collect semen.

Actual Scrotal: cm Age: 12 months Purchaser: \$

January 2016 Angus Australia BREEDPLAN											
Angus	EBV	Birth Wt.	Milk	200 Wt.	400 Wt.	600 Wt.	Scrotal Size	Carcase Wt.	EMA	Rump Fat	IMF%
	Acc	5.6	14	50	89	119	2.0	61	0.7	-0.4	1.9
		67%	48%	58%	56%	56%	47%	50%	45%	46%	44%

Traits Observed: BWT, 200WT



LOT 23

23 BANQUET LEIGHTON L005 HBR

Ident: VONL005 Tattoo: SNB L005 (T&F) Born: 13/02/2015 AMFU NHFU CAFU DD50%

TE MANIA EMPEROR E343 (AI)
AHWH70 ABERDEEN ESTATE HOMER H70 (AI)
 ABERDEEN ESTATE DREAM F21 (AI) (ET)

BANQUET XPLANATION X060 (AI) (ET)
VONH266 BANQUET IRENE H266 (AI) (ET)
 VERMONT IRENE W47 (AI) (ET)

L005 is thick and deep with a great hair and skin type. He has inherited his skin attributes from his dam line. He is the first calf from H266. She is very maternal with excellent udder and teats. Her flush brother, H261, sold for \$32,000 to Fernleigh Stud. We reserve the right to collect semen.

Actual Scrotal: cm Age: 12 months Purchaser: \$

January 2016 Angus Australia BREEDPLAN											
Angus	EBV	Birth Wt.	Milk	200 Wt.	400 Wt.	600 Wt.	Scrotal Size	Carcase Wt.	EMA	Rump Fat	IMF%
	Acc	5.0	15	45	88	119	1.8	61	2.5	-1.1	1.7
		70%	45%	62%	58%	59%	45%	51%	41%	43%	41%

Traits Observed: BWT, 200WT



BANQUET IRENE H266 – DAM OF LOT 23

AN OPPORTUNITY

LT BANDWAGON 3105

SIRE: LEACHMAN RIGHT TIME (USA)

DAM: LT VIKINGS VALUE 0256 (USA)

During Noeleen's intensive cattle tour of Canada and USA, she discovered L.T. Bandwagon. He impressed with his soundness and muscularity. His pedigree is the combination of two great US cow families. Bandwagon has had sons sell to \$12,500.



BANQUET KIWI DREAM M41 GRAND DAM OF LOTS 22, 25, 26, 27, 28 & 29

24 BANQUET LANTERN L035 (AI) HBR

Ident: VONL035 Tattoo: SNB L035 (T&F) Born: 27/03/2015 AMFU NHFU CAFU DDFU

LEACHMAN RIGHT TIME
USA14502851 L T BANDWAGON 3105
L T VIKINGS VALUE 0256

MERCHISTON VISION 564
VONH646 BANQUET QUIET H646 (AI) (ET)
BANQUET QUIET A172 (AI)

If you see the light it will be L035. L035 is a 2 year olds first calf. His thickness, muscularity and earlier maturity come from Bandwagon. His extra length and growth potential come from his dam, H646. Merchiston Vision had massive volume and capacity. He weighed 1400kg. at maturity. The Quiet family line have refinement up front with excellent capacity. We reserve the right to collect semen.

Actual Scrotal: cm Age: 10 months Purchaser: \$

January 2016 Angus Australia BREEDPLAN											
Angus	EBV	Birth Wt.	Milk	200 Wt.	400 Wt.	600 Wt.	Scrotal Size	Carcase Wt.	EMA	Rump Fat	IMF%
Acc		4.8	21	40	78	105	1.0	55	2.5	-0.6	0.8
		69%	50%	62%	59%	58%	50%	52%	44%	43%	42%

Traits Observed:GL,BWT,200WT



LOT 24

25 BANQUET KABRA K151 HBR

Ident: VONK151 Tattoo: SNB K151 (T&F) Born: 19/07/2014 AMFU NHFU CAFU DDFU

BANQUET XTRA BELIEF X030 (AI)
VONE007 BANQUET ENDEAVOUR E007 (AI) (ET)
BANQUET KIWI DREAM (AI)

BANQUET WAITOA W179 (AI) (ET)
VONE370 BANQUET KITE E370 (AI)
BANQUET KITE C286 (AI)

K151 has an excellent head and strong spine. He is a very deep bodied bull with massive capacity. K151 starts a run of five powerful young sires by Endeavour E007. E007 is our last son of the mighty Kiwi Dream M41. The dam of K151, E370, was sold at our "Belles of Banquet" Sale for \$7,500 to K5X Stud in Qld. Three generations in her dam line have been donors at Banquet.

Actual Scrotal: 44 cm Age: 19 months Purchaser: \$

January 2016 Angus Australia BREEDPLAN											
Angus	EBV	Birth Wt.	Milk	200 Wt.	400 Wt.	600 Wt.	Scrotal Size	Carcase Wt.	EMA	Rump Fat	IMF%
Acc		3.7	12	33	65	77	1.6	38	4.2	0.1	0.4
		72%	49%	66%	66%	65%	69%	56%	55%	56%	48%

Traits Observed:BWT,200WT(x2),400WT(x2),SS,FAT,EMA,IMF



LOT 25

26 BANQUET KLEM K144 HBR

Ident: VONK144 Tattoo: SNB K144 (T&F) Born: 6/07/2014 AMFU NHFU CAFU DDFU

BANQUET XTRA BELIEF X030 (AI)
VONE007 BANQUET ENDEAVOUR E007 (AI) (ET)
BANQUET KIWI DREAM (AI)

BANQUET DECODER D642 (AI)
VONF545 BANQUET DREAM F545
BANQUET DREAM D376

If your cowherd is losing frame and volume, K144 is the bull you need. K144 has massive length, growth and capacity. In years gone by we would have called him a "changer". His sire and maternal grand sire are both large framed sons of X030.

Actual Scrotal: 42 cm Age: 19 months Purchaser: \$

January 2016 Angus Australia BREEDPLAN										
Angus	Birth Wt.	Milk	200 Wt.	400 Wt.	600 Wt.	Scrotal Size	Carcase Wt.	EMA	Rump Fat	IMF %
EBV	5.4	17	43	79	107	3.8	54	4.1	-0.7	0.5
Acc	71%	47%	66%	66%	67%	64%	55%	51%	53%	45%

Traits Observed: BWT, 200WT(x2), 400WT, 600WT, SS, FAT, EMA, IMF

27 BANQUET KELLETT K157 HBR

Ident: VONK157 Tattoo: SNB K157 (T&F) Born: 24/07/2014 AMFU NHFU CAFU DDFU

BANQUET XTRA BELIEF X030 (AI)
VONE007 BANQUET ENDEAVOUR E007 (AI) (ET)
BANQUET KIWI DREAM (AI)

BANQUET ALLAN A190 (AI)
VONC420 BANQUET WIVEM C420
BANQUET WIVEM Z256 (AI)

K157 is the last in the trio of E007 sons. Like his brothers, K157 is thick and deep with good length. His dam, C420, sold for \$8,500 in our "Belles of Banquet" Sale to Jade Park. A half brother to K157 sold for \$6,000. Alan A190 sold for \$20,000 to Skagway Angus.

Actual Scrotal: 43 cm Age: 19 months Purchaser: \$

January 2016 Angus Australia BREEDPLAN										
Angus	Birth Wt.	Milk	200 Wt.	400 Wt.	600 Wt.	Scrotal Size	Carcase Wt.	EMA	Rump Fat	IMF %
EBV	5.5	13	36	65	86	2.7	42	2.5	-1.5	0.7
Acc	71%	50%	65%	66%	69%	68%	55%	53%	55%	46%

Traits Observed: BWT, 200WT(x2), 400WT, 600WT, SS, FAT, EMA, IMF



LOT 27

28 BANQUET KAISER K133 HBR

Ident: VONK133 Tattoo: SNB K133 (T&F) Born: 24/06/2014 AMFU NHFU CAFU DDFU

BANQUET XTRA BELIEF X030 (AI)
VONE007 BANQUET ENDEAVOUR E007 (AI) (ET)
BANQUET KIWI DREAM (AI)

BANQUET DAY DREAM D053 (AI) (ET)
VONF673 BANQUET DREAM F673
BANQUET DREAM U44 (AI) (ET)

As with Lot 26 both his sire and maternal grandsire are X030 sons. K133 is a deep, easy doing sire with great muscularity. Strongly line bred to the Dream family, in fact five crosses.

Actual Scrotal: 39 cm Age: 20 months Purchaser: \$

January 2016 Angus Australia BREEDPLAN										
Angus	Birth Wt.	Milk	200 Wt.	400 Wt.	600 Wt.	Scrotal Size	Carcase Wt.	EMA	Rump Fat	IMF %
EBV	5.9	11	35	58	74	2.7	36	3.0	-0.5	0.4
Acc	73%	51%	69%	70%	73%	72%	60%	58%	59%	51%

Traits Observed: BWT, 200WT(x2), 400WT, 600WT, SS, FAT, EMA, IMF

29 BANQUET KAOOTA K155 HBR

Ident: VONK155 Tattoo: SNB K155 (T&F) Born: 22/07/2014 AMFU NHFU CAFU DDFU

BANQUET XTRA BELIEF X030 (AI)
VONE007 BANQUET ENDEAVOUR E007 (AI) (ET)
BANQUET KIWI DREAM (AI)

BANQUET TIME FRAME Y135 (AI) (ET)
VONA317 BANQUET IRENE A317
BANQUET IRENE S43 (AI) (ET)

No wonder these bulls have extra length and growth. Their sire is the last son of the legend, Banquet Kiwi Dream M41. Their maternal grandsires are similar with extra extension and volume. The grandsire of K155 is the former record holder Time Frame Y135. Y135 is also a son of Kiwi Dream M41.

Actual Scrotal: 42 cm Age: 19 months Purchaser: \$

January 2016 Angus Australia BREEDPLAN										
Angus	Birth Wt.	Milk	200 Wt.	400 Wt.	600 Wt.	Scrotal Size	Carcase Wt.	EMA	Rump Fat	IMF %
EBV	6.1	12	39	73	101	2.7	48	1.6	-1.8	0.4
Acc	74%	54%	69%	70%	72%	71%	60%	58%	60%	52%

Traits Observed: BWT, 200WT(x2), 400WT, 600WT, SS, FAT, EMA, IMF



**BANQUET TIME FRAME Y135
GRAND SIRE OF LOT 29**

30 BANQUET KERR K215 (AI) (ET) HBR

Ident: VONK215 Tattoo: SNB K215 (T&F) Born: 8/09/2014 AMFU NHFU CAFU DDFU

MILLAH MURRAH EQUATOR D78 (AI)
 NMMF159 MILLAH MURRAH DOC F159 (AI)
 HAZELDEAN Y275 (AI)

BANQUET ZEALFUL Z021
 VOND351 BANQUET YENDI D351 (AI)
 BANQUET YENDI B243 (AI)

K215 has massive volume, growth and capacity. He is a very powerful son of Doc F159. Doc is a favourite at Millah Murrah and we think he will have a positive impact at Banquet. Yendi D351 was an outstanding donor for us. Fernleigh Stud purchased her for \$10,000 in our "Belles of Banquet" Sale. A 12 month old grand daughter sold for \$7,000 in that Sale. We have six daughters of D351 in our herd.

Actual Scrotal: 39 cm Age: 17 months Purchaser: \$

January 2016 Angus Australia BREEDPLAN										
Angus	Birth Wt.	Milk	200 Wt.	400 Wt.	600 Wt.	Scrotal Size	Carcase Wt.	EMA	Rump Fat	IMF %
EBV	7.3	13	52	93	129	2.1	65	3.6	0.5	1.0
Acc	73%	52%	67%	65%	64%	56%	55%	51%	53%	50%

Traits Observed: BWT, 200WT(x2), 400WT, SS, FAT, EMA, IMF



LOT 30



BANQUET IRENE D351 – DAM OF LOT 30

31 BANQUET KAROO K290 (AI) HBR

Ident: VONK290 Tattoo: SNB K290 (T&F) Born: 19/09/2014 AMFU NHFU CAFU DDFU

ARDROSSAN EQUATOR A241 (AI) (ET)
 NZCF77 KO A241 EQUATOR F77 (AI) (ET)
 VERMONT DREAM Y301 (AI) (ET)

BANQUET TIME FRAME Y135 (AI) (ET)
 VONA266 BANQUET IRENE A266 (TW)
 BANQUET IRENE W152 (AI)

F77 expresses extra length of body and neck extension. See notes on sires for more detail on this exceptional sire. K290 shows the traits we expect from his sire. He has extra length of body. He is thick with great muscularity and a big powerful head.

Actual Scrotal: 38 cm Age: 17 months Purchaser: \$

January 2016 Angus Australia BREEDPLAN										
Angus	Birth Wt.	Milk	200 Wt.	400 Wt.	600 Wt.	Scrotal Size	Carcase Wt.	EMA	Rump Fat	IMF %
EBV	3.8	18	41	87	113	2.0	62	2.4	-2.5	1.4
Acc	73%	53%	68%	68%	66%	71%	58%	57%	59%	51%

Traits Observed: GL, CE, BWT, 200WT(x2), 400WT, SS, FAT, EMA, IMF



BANQUET IRENE D457 – HALF SISTER TO LOT 31

32 BANQUET KNAPE K283 HBR

Ident: VONK283 Tattoo: SNB K283 (T&F) Born: 19/09/2014 AMFU NHFU CAFU DDFU

COONAMBLE Z3 (AI) (ET)
 VONF683 BANQUET FREDERICK F683 (AI) (ET)
 VERMONT DREAM B272 (AI) (ET)

BANQUET COBEE C084
 VONG443 BANQUET JEDDA G443
 BANQUET JEDDA D428

K283 is a son of Frederick F683. What a powerful line of calves he has produced. K283 is strong headed with a long, smooth and muscular body. We prize the soft, clean skins the F683 have. The grand sire of K283, Cobee C084, was just like this too. He sold for \$16,000 to Toora West.

Actual Scrotal: 41 cm Age: 17 months Purchaser: \$

January 2016 Angus Australia BREEDPLAN										
Angus	Birth Wt.	Milk	200 Wt.	400 Wt.	600 Wt.	Scrotal Size	Carcase Wt.	EMA	Rump Fat	IMF %
EBV	4.9	14	45	82	109	2.7	63	6.4	-0.2	1.4
Acc	71%	44%	65%	66%	62%	69%	53%	53%	54%	45%

Traits Observed: CE, BWT, 200WT(x2), 400WT, SS, FAT, EMA, IMF

33 BANQUET KENNY K250 (AI) HBR

Ident: VONK250 Tattoo: SNB K250 (T&F) Born: 12/09/2014 AMFU NHFU CAFU DDFU

BANQUET DUNCAN D412 (AI)
 VONG275 BANQUET GARTON G275
 BANQUET IRENE C417

BANQUET BUNDY B002 (AI) (ET)
 VOND482 BANQUET KITE D482
 BANQUET KITE A242

K250 is a thick, muscular and long bodied young sire with a strong head. His pedigree is exceptional. His sire, G275, topped our 2013 sale at \$20,000 to Toora West. Dianna sold his dam, Kite D482, for \$17,000 to Bannaby Angus in our "Belles of Banquet" Sale. Bannaby also purchased a flush sister to Bundy B002, sire of D482.

Actual Scrotal: 38 cm Age: 17 months Purchaser: \$

January 2016 Angus Australia BREEDPLAN											
Angus	EBV	Birth Wt.	Milk	200 Wt.	400 Wt.	600 Wt.	Scrotal Size	Carcase Wt.	EMA	Rump Fat	IMF %
	Acc	5.7	10	42	84	109	2.8	55	1.8	-0.4	1.4
		71%	46%	65%	66%	63%	69%	54%	52%	55%	43%

Traits Observed:GL,CE,BWT,200WT(x2),400WT,SS,FAT,EMA,IMF



LOT 33



BANQUET KITE D482 – DAM OF LOT 33

34 BANQUET KALTARA K195 (APR) Base APR

Ident: VONK195 Tattoo: SNB K195 (T&F) Born: 2/09/2014 AMF NHF CAF DDF

COONAMBLE Z3 (AI) (ET)
 VONF683 BANQUET FREDERICK F683 (AI) (ET)
 VERMONT DREAM B272 (AI) (ET)

VONG428 BANQUET G428 (APR)

K195 has an exceptional sleek skin. He is a fine shouldered, long bodied young bull. His mobility and accuracy of movement is greatly admired. His dam has been elevated to the APR status. A young cow has to really impress to achieve this. If she continues to produce calves like K195 our confidence will be justified.

Actual Scrotal: 38 cm Age: 17 months Purchaser: \$

January 2016 Angus Australia BREEDPLAN											
Angus	EBV	Birth Wt.	Milk	200 Wt.	400 Wt.	600 Wt.	Scrotal Size	Carcase Wt.	EMA	Rump Fat	IMF %
	Acc										

Traits Observed:

35 BANQUET KNELL K190 HBR

Ident: VONK190 Tattoo: SNB K190 (T&F) Born: 2/09/2014 AMFU NHFU CAFU DDFU

COONAMBLE Z3 (AI) (ET)
 VONF683 BANQUET FREDERICK F683 (AI) (ET)
 VERMONT DREAM B272 (AI) (ET)

BANQUET CAPACITY C167 (AI)
 VONG322 BANQUET NANNY G322 (TW)
 BANQUET NANNY B131 (AI)

On inspection K190 presented as a sleek, smooth skinned individual. He is accurate through his shoulders and hence he strides out beautifully. When we checked his pedigree it confirmed our observations. F683 over a C167 over a Radar W42. All big, long bulls with excellent skins. The only other son of G322 sold for \$5,000.

Actual Scrotal: 38 cm Age: 17 months Purchaser: \$

January 2016 Angus Australia BREEDPLAN											
Angus	EBV	Birth Wt.	Milk	200 Wt.	400 Wt.	600 Wt.	Scrotal Size	Carcase Wt.	EMA	Rump Fat	IMF %
	Acc	6.1	12	45	81	115	1.1	61	4.6	-2.3	1.2
		71%	45%	64%	65%	62%	69%	53%	53%	54%	45%

Traits Observed:CE,BWT,200WT(x2),400WT,SS,FAT,EMA,IMF

36 BANQUET KENSINGTON K204 HBR

Ident: VONK204 Tattoo: SNB K204 (T&F) Born: 5/09/2014 AMFU NHFU CAFU DDFU

COONAMBLE Z3 (AI) (ET)
 VONF683 BANQUET FREDERICK F683 (AI) (ET)
 VERMONT DREAM B272 (AI) (ET)

BANQUET ARROGANCE V100 (AI)
 VONZ126 BANQUET QUIET Z126 (AI) (ET)
 GV QUIET Q15 (AI) (ET)

If you wish to increase the length and scale of your calves, K204 is the type of bull you should select. He shows these traits and his pedigree reinforces it. F683 over a V100. Both big, long, heavy bulls. V100 topped our sale at \$20,000 to Wittlocka and Toora West. Half brothers to K204 have sold for \$12,500, \$7,000, \$6,500 and \$5,000.

Actual Scrotal: 37 cm Age: 17 months Purchaser: \$

January 2016 Angus Australia BREEDPLAN											
Angus	EBV	Birth Wt.	Milk	200 Wt.	400 Wt.	600 Wt.	Scrotal Size	Carcase Wt.	EMA	Rump Fat	IMF %
	Acc	7.4	12	47	86	118	1.6	62	2.1	-1.5	1.2
		72%	51%	67%	67%	64%	68%	56%	55%	56%	48%

Traits Observed:CE,BWT,200WT(x2),400WT,SS,FAT,EMA,IMF

37 BANQUET KENMORE K249 (AI) (ET) HBR

Ident: VONK249 Tattoo: SNB K249 (T&F) Born: 12/09/2014 AMFU NHFU CAFU DDF

MILLAH MURRAH EQUATOR D78 (AI)
 NMMF159 MILLAH MURRAH DOC F159 (AI)
 HAZELDEAN Y275 (AI)

BANQUET XPLANATION X060 (AI) (ET)
 VOND230 BANQUET DREAM D230 (AI)
 BANQUET DREAM B126 (AI) (ET)

K249 could be special. Few bulls can match his tremendous volume and width through his hip and pins. He is proud, strong headed and has great carriage. His dam, D230, is a favourite. Despite being a carrier of the DD defect we will continue to AI and flush her. Simply test the progeny and cull the carriers. We have great expectations for the flush sister to K249.

Actual Scrotal: 42 cm Age: 17 months Purchaser: \$

January 2016 Angus Australia BREEDPLAN											
Angus	EBV	Birth Wt.	Milk	200 Wt.	400 Wt.	600 Wt.	Scrotal Size	Carcase Wt.	EMA	Rump Fat	IMF%
	Acc	6.6	14	48	94	126	1.7	65	2.1	-0.4	1.2
		72%	50%	67%	67%	65%	66%	56%	55%	56%	51%

Traits Observed: BWT, 200WT(x2), 400WT, SS, FAT, EMA, IMF



LOT 37

38 BANQUET KASPER K247 (AI) HBR

Ident: VONK247 Tattoo: SNB K247 (T&F) Born: 12/09/2014 AMFU NHFU CAFU DDF

BT EQUATOR 395M
 NMMD78 MILLAH MURRAH EQUATOR D78 (AI)
 MILLAH MURRAH RADO Y119 (AI)

BANQUET DUNCAN D412 (AI)
 VONF527 BANQUET DREAM F527
 BANQUET DREAM A203 (AI)

K247 is a strong headed, meat machine. He is thick and muscular with a strong loin. K247 is our first of three D78 sons. D78 has massive growth data that is highly accurate. In this case we joined him to a daughter of Duncan D412. D412 sons have sold to \$20,000 and we have used five. Sons of G275 and G306 feature in this catalogue.

Actual Scrotal: 41 cm Age: 17 months Purchaser: \$

January 2016 Angus Australia BREEDPLAN											
Angus	EBV	Birth Wt.	Milk	200 Wt.	400 Wt.	600 Wt.	Scrotal Size	Carcase Wt.	EMA	Rump Fat	IMF%
	Acc	5.3	17	48	92	125	2.5	65	3.3	-0.3	0.6
		73%	56%	69%	69%	67%	71%	60%	59%	61%	54%

Traits Observed: GL, CE, BWT, 200WT(x2), 400WT, SS, FAT, EMA, IMF



LOT 38

39 BANQUET KAKADU K246 (AI) (ET) HBR

Ident: VONK246 Tattoo: SNB K246 (T&F) Born: 12/09/2014 AMFU NHFU CAFU DDF

BT EQUATOR 395M
 NMMD78 MILLAH MURRAH EQUATOR D78 (AI)
 MILLAH MURRAH RADO Y119 (AI)

BANQUET TIME FRAME Y135 (AI) (ET)
 VONA250 BANQUET DREAM A250
 BANQUET DREAM V109 (AI) (ET)

Dream A250 is a "pin up" donor at Banquet. She is sleek coated, thick and deep. An exceptional udder and a top breeder. This son is just like her. Sleek, fine skinned with enormous capacity and muscularity. A strong spined, correctly made individual with top sire prospects. Full brother to Lot 41 & 70.

Actual Scrotal: 44 cm Age: 17 months Purchaser: \$

January 2016 Angus Australia BREEDPLAN											
Angus	EBV	Birth Wt.	Milk	200 Wt.	400 Wt.	600 Wt.	Scrotal Size	Carcase Wt.	EMA	Rump Fat	IMF%
	Acc	5.0	15	52	95	134	2.8	68	4.0	-0.6	0.7
		67%	61%	69%	69%	67%	69%	62%	61%	62%	58%

Traits Observed: 200WT(x2), 400WT, SS, FAT, EMA, IMF



LOT 39